



# RescueNet Solutions for Flight

Next-Generation Dispatch, Billing and Field Data Collection



Above and beyond RescueNet® Dispatch's extensive dispatch and management features, there's an integrated set of options specifically designed for air medical transport. Already popular with flight programs, RescueNet Dispatch for Flight is unique as a computer-aided dispatch system that meets both your ground- and flight-based dispatch needs. Combined with RescueNet Dispatch's integrated mapping, GIS, billing, electronic patient care reports and statistical reporting capabilities, RescueNet Dispatch for Flight provides an unsurpassed data management system for flight programs.

RescueNet is a fully integrated data management system that gathers and centralizes information and links the entire pre-hospital chain of events into a single EMS system. It offers the quickest, easiest way to improve your business and clinical operations, and it's the only EMS data management solution of its kind. RescueNet's open, Windows®-based architecture delivers seamless integration with legacy systems, and provides scalability to grow your system as fast as you grow your business.

**ZOLL**

## Computer-Aided Dispatch for Flight

User-friendly RescueNet Dispatch is state-of-the-art EMS CAD software that makes your entire operation more efficient. Whether you're fielding emergency calls or scheduling inter-facility air transports, RescueNet Dispatch's leading-edge architecture brings unmatched efficiency to all areas of your EMS operation. With its high-performance features, RescueNet Dispatch helps you streamline call-taking and dispatch to cut response times. And it uses intuitive modules to collect important information that can be used in future calls.

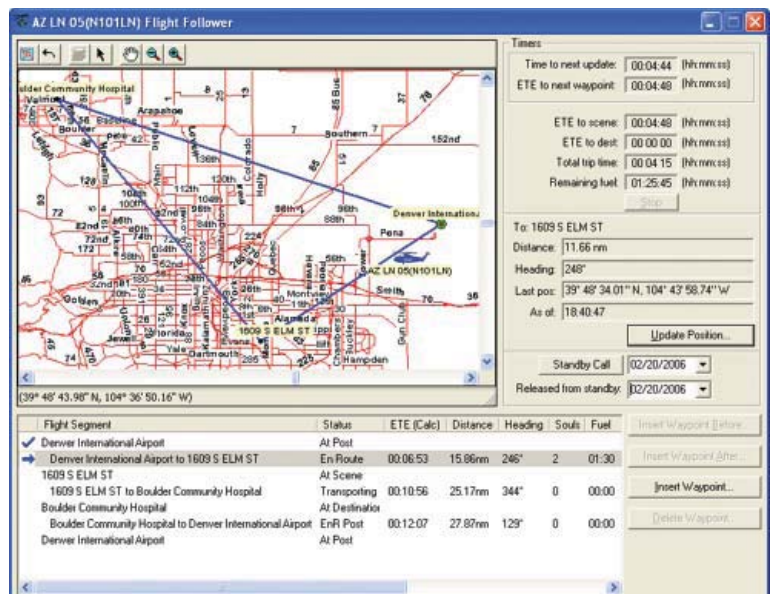
### Easy Flight Dispatching

- Powerful cataloging of your waypoint and facility lists helps you quickly find the exact LZ you are seeking
- Proximity searching allows you to locate the nearest LZ, trauma center, or fuel depot to your aircraft
- Automatic prompting for vehicle position updates ensures that communication to the pilots is never delayed
- Configurable waypoint alerts give 'just-in-time' information about the next waypoint in your flight plan so you can give safety information to the pilots when they need it

- Monitor the status and position of your aircraft visually during its flight, comparing its location against the flight plan to ensure crew safety
- Timers give up-to-date information about estimated time en route, time to scene, fuel remaining, and total trip time
- Capture information about standby calls so you know who's using your service and how often they are crying 'Wolf!'

### Detailed Flight Tracking

- Flight plans are automatically generated and displayed when a new trip is assigned to one of your aircraft
- Quickly edit your flight plans by adding or deleting waypoints at any time during the flight
- ETA, heading, and distance between waypoints are dynamically calculated as your flight plan and/or vehicle's location change
- The map visually displays the flight plan and the vehicle location, updated in real time
- Store a list of commonly used pre-defined flight paths.





## Flight Following Module

---

RescueNet Dispatch for Flight provides communication specialists with the tools they need to perform their jobs optimally. The Flight Following module allows the viewing of all vehicle and flight plan information in one place, enabling users to concentrate on accuracy and safety.

The map displays the flight plan and the vehicle's present location giving a visual indication of where the aircraft is relative to its destination and plan. Keep track of when aircraft are due to arrive on scene, how much fuel they have, and when they need to report position information by just glancing at one of many informative timers. Dynamically alter your flight plan to account for picking up medical staff or to add in-flight diversion points to route around weather by inserting or deleting waypoints. Heading, distance, and ETE information from waypoint to waypoint are automatically calculated and shown for easy communication to the pilots. All the data captured during lift-offs and landings is also displayed including souls on board, fuel quantity, and arrival and departure times.

A powerful waypoint cataloging engine allows the quick lookup of a specific landing zone even for services that cover a large geographical area. Communications specialists can find the nearest landing zone to either the vehicle or a location using the new proximity searching function. Locating the nearest trauma center to the scene or finding a fuel depot during a flight are just a few examples of how this powerful feature can be used. Finally, integration with on-board GPS systems like Outerlink and Sky Connect allow for almost real-time position updates on your vehicle's location, allowing you to know exactly where the aircraft are located.

## Field Data Collection Solutions

---

The RescueNet ePCR Suite helps streamline data collection in the field, delivers accurate electronic patient care reports, and improves overall operations. It can also help you eliminate inefficient paper processes, increase manpower efficiency, and help comply with HIPAA requirements. The ePCR solutions is a key component of the integrated, single-database RescueNet suite. From the time a call is dispatched, the data automatically flows to your medics and EMTs in the field, and ultimately to your billing department. The results are accurate and timely electronic patient care reports and faster collections. The RescueNet ePCR Suite is a feature-rich application with extensive management, reporting, and analysis functionality. The highly configurable nature of the solution allows you to capture the data you need, including complicated interventions common to air medical transports. And it adapts to your business to make you more successful.

## Billing and Collections Solutions

---

RescueNet Billing automates your billing process and instantly monitors claims for errors, which can result in quicker receivable turnaround times. RescueNet Billing verifies the transport and audits the billing details. Claims are transmitted with proper electronic standards to the payor. The data is also available for reporting, education, benchmarking, and performance analysis as soon as the information is entered in the central database. Its seamless integration with other RescueNet solutions means collected information is immediately available to your billing clerks, and this can eliminate time-consuming, error-prone, and duplicated data entry. After the patient care report is created, the completed chart is sent electronically to your database where it's added to the central patient record. The information is now available for billing—no re-keying of data and no waiting for paperwork. And reimbursements can be received faster than ever before.

## Crew Scheduling and Deployment Planning

---

Scheduling personnel is always a challenge for EMS managers and supervisors. Now you can optimize your crew scheduling and reduce costs at the same time with RescueNet Crew Scheduler. No more scheduling with spreadsheets and white boards because with Crew Scheduler, you can automate your scheduling process. You can accommodate complex scheduling patterns, help decrease overtime costs, and improve crew satisfaction with this web-based application – all leading to more efficient and cost-effective operations.

Understanding how to create optimal schedules given your resource constraints and call volume, while taking into account the desires of your employees and your financial goals used to be a nearly impossible task. RescueNet Resource Planner is a powerful tool for creating demand-based deployment of personnel and resources, balancing service level agreements and parameters set by you to match your business needs. EMS organizations use Resource Planner to improve their UHU, control shift expenses, improve shift utilization, and dramatically decrease the scheduling effort to meet your organization's demand. Additionally, the ability to quickly create "What if" scenarios allows management to see the impact of adding vehicles or personnel to their service. Imagine being able to answer your boss' question about the impact of adding another helicopter to your service within minutes with accurate cost, coverage, and UHU analysis!

**ZOLL**

[www.zolldata.com](http://www.zolldata.com)

US Sales 800 474 4489 | US Fax 303 801 0001 | US Direct Dial +1 303 801 0000  
Asia/Pacific +61 2 9420 8733 | Europe +44 (0) 1925 846400

**Microsoft**  
**GOLD CERTIFIED**  
*Partner*

ISV/Software Solutions