

ZOLL Respond

SOLUTION OVERVIEW



Smart Response on Your iOS or Android Device

With ZOLL® Respond, transport assignments and trip statuses are tracked and communicated automatically between the dispatcher and field crew. Users have access to real-time navigation via cloud-based maps and can view and respond to trip pick-up and drop-off points. No need for crews to remember or write down critical information when traveling to a scene – with the ZOLL Respond application, details are in the palm of your hand. Automatic data transfer saves time, increases efficiency, and reduces data entry errors. Crews are freed up to focus on what matters most: taking care of the patient.



Capabilities

- Navigate to pick-up and drop-off points
- View, track, and respond to trips through cloud-based, real-time enhanced maps
- Communicate statuses EnRoute through Complete



Benefits

- Provides automatic data transfer between dispatch and crews in the field
- Real-time mapping enables turn-by-turn routing and easy navigation
- Minimizes communications center chatter
- Reduces data touch points and minimizes risk of data entry errors and omissions

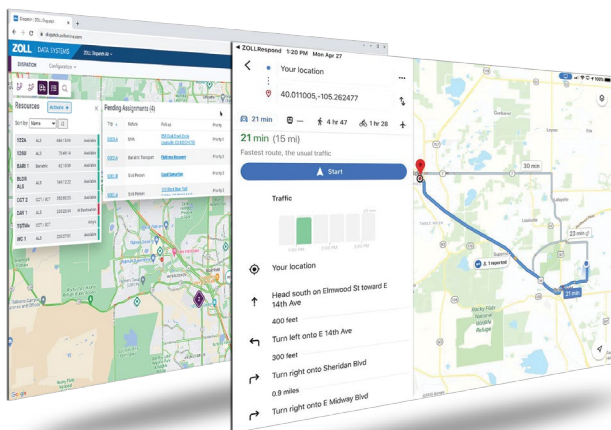
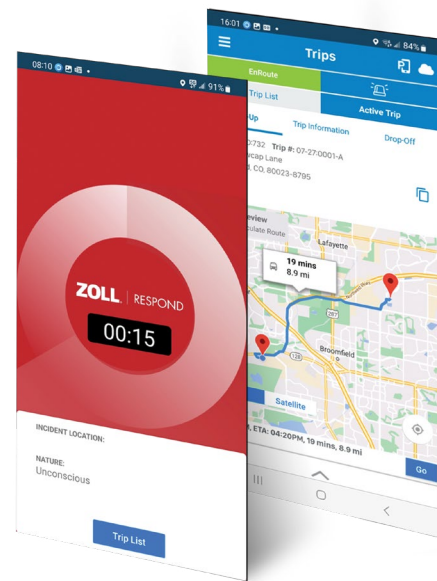
Track, Update, and Communicate Transport Statuses More Efficiently

Our ZOLL Respond application gives dispatchers, crews, and clinicians at the destination facility cloud-based mapping that puts turn-by-turn routing and navigation in the palm of your hand.



Key Features

- iOS and Android smart device compatible
- Automatic trip status updates
- Trip management
- Integrated cloud-based mapping, turn-by-turn navigation, and live traffic
- Mileage calculation
- Visible and audible trip response alerts



Route to Scene

Once a crew acknowledges an assignment and is en route, the route is displayed and turn-by-turn directions can be activated.



To learn more,
please call us or visit our website:

800-474-4489
www.zolldata.com